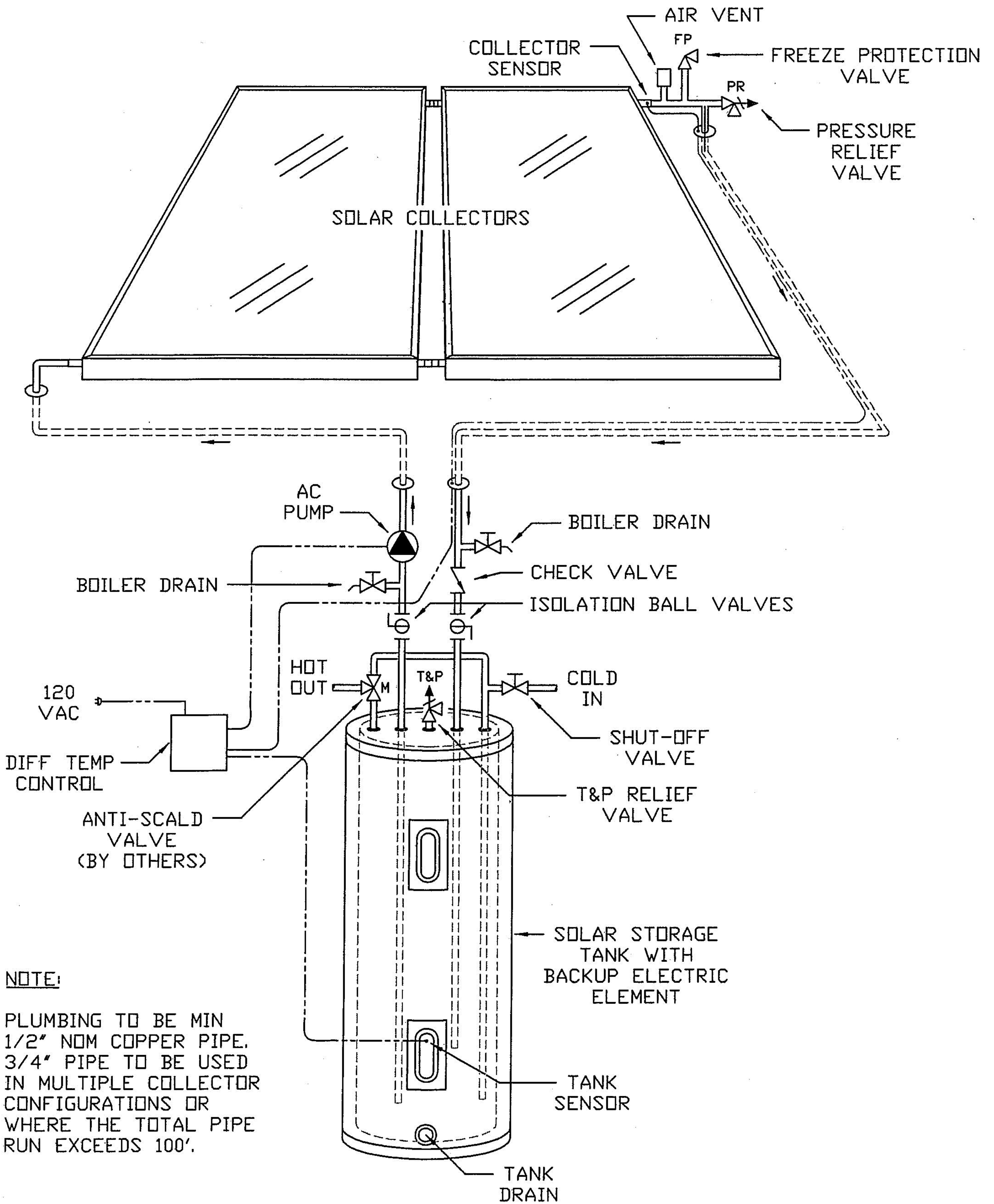


DIRECT SYSTEM

TS-EZ-120-64 Direct



NOTE:

PLUMBING TO BE MIN 1/2" NOM COPPER PIPE. 3/4" PIPE TO BE USED IN MULTIPLE COLLECTOR CONFIGURATIONS OR WHERE THE TOTAL PIPE RUN EXCEEDS 100'.