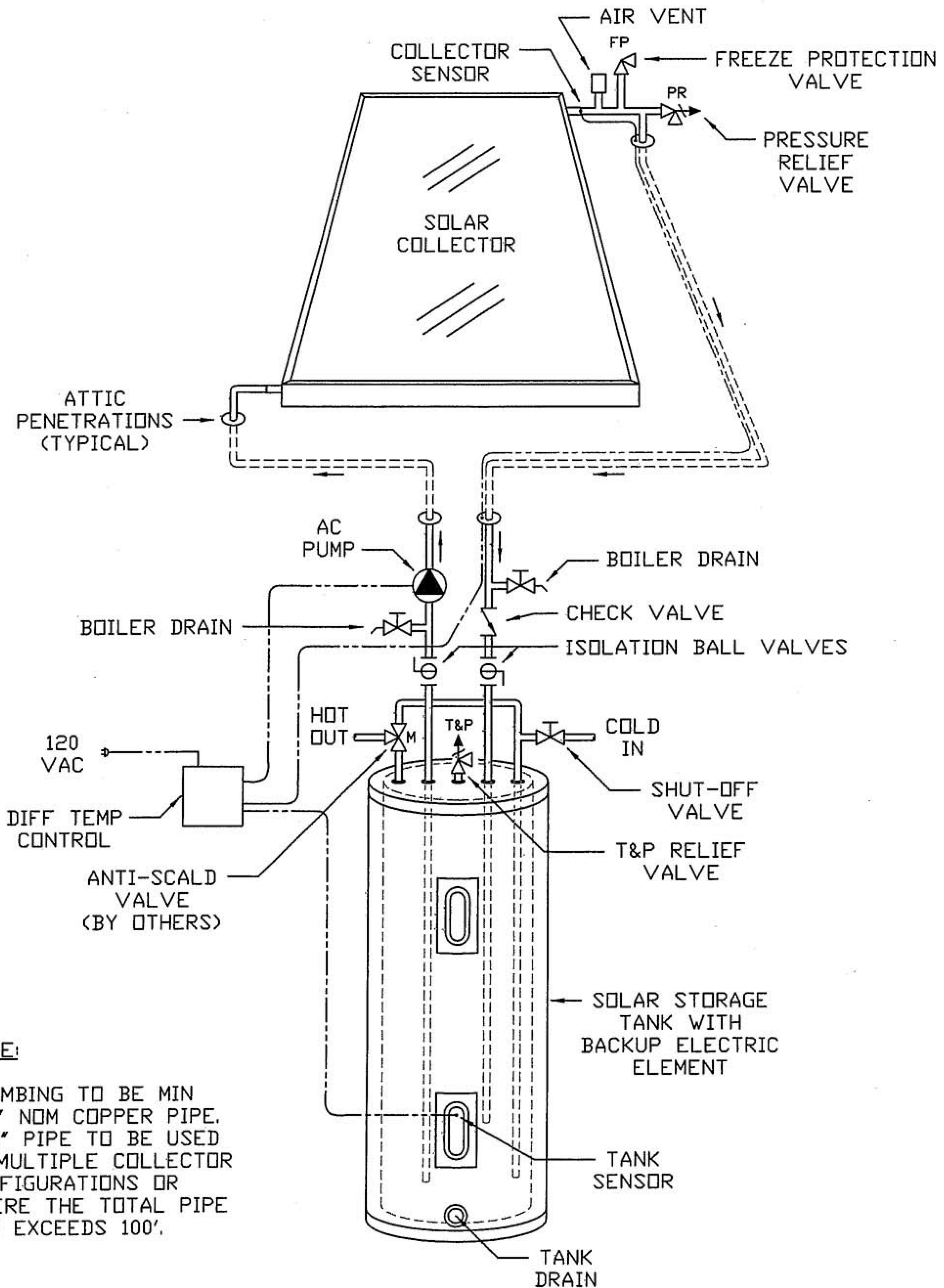


# DIRECT SYSTEM

TS-EZ 80-32D



## NOTE:

PLUMBING TO BE MIN 1/2" NOM COPPER PIPE. 3/4" PIPE TO BE USED IN MULTIPLE COLLECTOR CONFIGURATIONS OR WHERE THE TOTAL PIPE RUN EXCEEDS 100'.